



ASSAGO MILANOFIORI
A11-A12-A13 Building
Property Sheet

Palazzo A11-A12-A13, ASSAGO



TOTAL AVAILABLE AREA 12.006

ASKING RENT 150 €/sqm/year

AVAILABILITY From ground floor to 4th floor: Q4 2023
5th Floor: Immediate

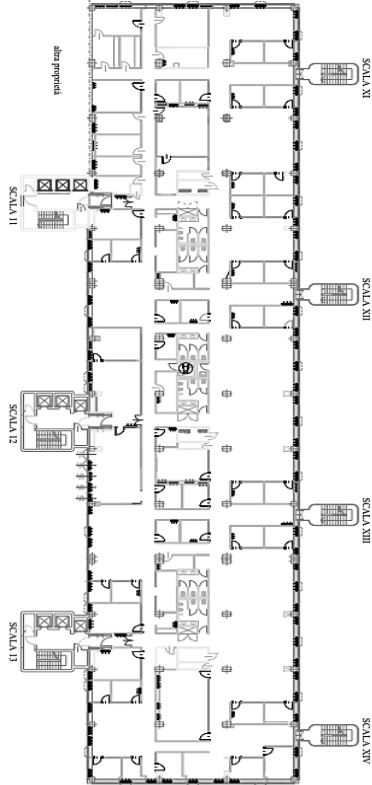
AVAILABLE FLOORS 2nd floor of 2.457 sqm
3rd floor of 2.452 sqm
4th floor of 2.452 sqm
5th floor of 1.548 sqm

GRADE B

PUBLIC TRANSPORT MM2: Assago Milanofiori

COMMENTS Delivery conditions: ready to use (partially fitted)
Open space and flexible layout
Two entrances whit dedicate reception
Raised floor
Service Chages estimated €. 35/sqm/yr + VAT ca.
Archive: in the basement
140 car parking spaces
13 motorbike parking spaces

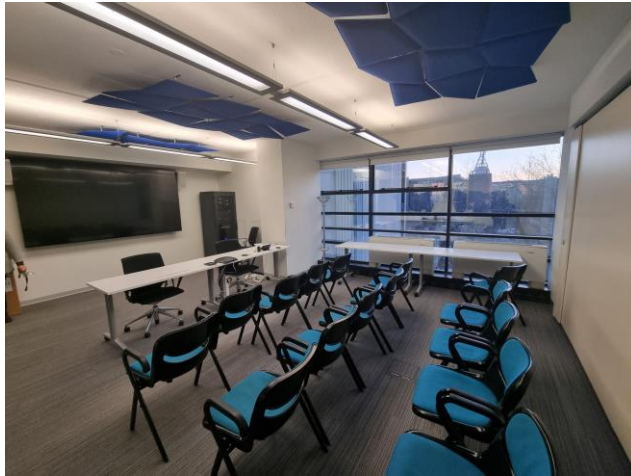
Palazzo A11-A12-A13, ASSAGO



Layout 4th Floor of 2.454 sqm

Floor	Sqm	Availability
Ground	219	Q4 2023
2nd	2.457	Q4 2023
3rd	2.452	Q4 2023
4th	2.454	Q4 2023
5th	1.548	Immediate

Palazzo A11-A12-A13, ASSAGO



ANDREA ZANIERATO
+39 344 1858607
andrea.zanierato@cushwake.com

GIACOMO PADERNO
+39 345 861 6085
giacomo.paderno@cushwake.com



C & W (U.K.) LLP
Via Filippo Turati 16/18
20121 Milano

C & W (U.K.) LLP Copyright 2022. NO WARRANTY OR REPRESENTATION, EXPRESS OR IMPLIED, IS MADE TO THE ACCURACY OR COMPLETENESS OF THE INFORMATION CONTAINED HEREIN, AND SAME IS SUBMITTED SUBJECT TO ERRORS, OMISSIONS, CHANGE OF PRICE, RENTAL OR OTHER CONDITIONS, WITHDRAWAL WITHOUT NOTICE, AND TO ANY SPECIAL LISTING CONDITIONS IMPOSED BY THE PROPERTY OWNER(S). AS APPLICABLE, WE MAKE NO REPRESENTATION AS TO THE CONDITION OF THE PROPERTY (OR PROPERTIES) IN QUESTION.